

EVACUATION SYSTEMS

WHEN THE POWER GOES OUT

LIGHTSTATION®

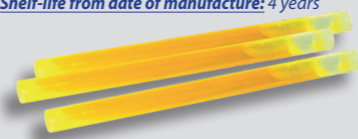
With an easy to locate glowing photoluminescent label on the front cover, LightStation® provides assurance that a safe light will be available when the power goes out.



LIGHTSTATION® Model 20

Designed with a heavy-duty molded plastic case. When the front cover is pulled open, one SnapLight® (25 cm) activates, leaving 19 SnapLight® lightsticks for individuals to carry and use as light sources while evacuating. Available in Red.

| LightStation® | PART# | CASE | 10" REFILL | PART# | CASE |
|---|---------|------|---------------|-----------|------------|
| Model 20 red | 9-00364 | 4 | Yellow 4 HR* | 9-00388PF | 1 x 20-PK |
| SnapLight® lightsticks not included in LightStation®. | | | Yellow 4 HR** | 9-00352PF | 10 x 20-PK |
| Shelf-life from date of manufacture: 4 years | | | Tamper Pin | 9-00354 | 25 |



*MOQ > 20pcs (1 x 20pcs)
**MOQ > 200pcs (10 x 20pcs)

PHOTOLUM PLATE

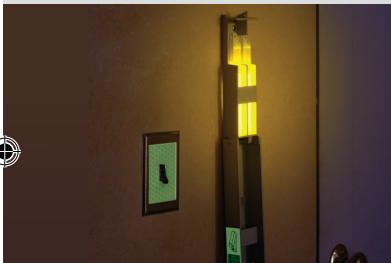


Equipped with an adhesive backing and pre-drilled holes, the Photolum Plate is easy to install and operate. Provide cost effective emergency lighting wherever it is needed.

| PHOTOLUM PLATE | PART# | CASE |
|------------------------------------|-----------------|------|
| With 2x6" SnapLight® Yellow 30 MIN | LTD9-CABINPACKA | 1 |
| With 2x6" SnapLight® Green 12 HR | LTD9-CABINPACKB | 1 |

Shelf-life from date of manufacture: 4 years for the 30 min, 5 years for the 12 HR

S.E.E.® SYSTEM



Install the S.E.E.® System with glowing photoluminescent label along a designated evacuation route to provide a safe, clearly lit path throughout a building. When the front cover is pulled open, two 6" SnapLight® lightsticks activate, providing instant light to prevent slips, trips and falls. Includes 2-hour Yellow high-intensity SnapLight® (15cm) lightsticks..

| S.E.E.® System | PART# | CASE |
|-----------------------------------|-------------|------|
| S.E.E.® Box with 2 SnapLight®**** | 9-08500PF | 10 |
| Refill 6" Yellow 2 HR**** | SA8-08505PF | 100 |
| Tamper Proof Pins | 4-2101 | 50 |

****Includes Mounting Hardware & 2 Pins/PK. Sold as 10 Pack System. Not Packaged for Individual Sale.
****Pack 10x10pcs, includes 50 Expiration Date Labels & 50 Tamper Pins.

Shelf-life from date of manufacture: 5 years

CYFLECT®

CyFlect® is a range of retro-reflective and photoluminescent material for safe evacuation and personal protection. Reflective and self-luminous tapes, ideal for use on signs, displays, buildings, steps, stairs, and doorways. Available as sew on or adhesive in a variety of sizes. Custom colors, patterns, designs and insignia are available upon request.

CYFLECT®

Honeycomb tapes and rolls - adhesive or to sew on



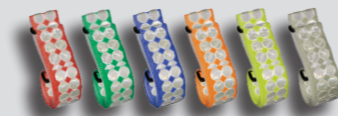
| CyFlect Roll | CODE ART. |
|---|-----------|
| 1,5" x 5' roll (3,8cm x 1,52m) adhesive | 9-30014 |
| 1" x 150' roll (2,5cm x 45m) sew on | 9-30007 |
| 1" x 150' roll (2,5cm x 45m) adhesive | 9-30006 |
| 1,5" x 150' roll (3,8cm x 45m) adhesive | 9-30011 |
| 2" x 150' roll (5cm x 45m) sew on | 9-30009 |
| 2" x 150' roll (5cm x 45m) adhesive | 9-30012 |

PT-BELT®

With velcro and buckle strap, adjustable



| PT-Belt™ | CODE ART. |
|-------------------------------------|------------|
| White belt 2" x 5,5' (5cm x 1,68m) | 9-3012509 |
| Blue belt 2" x 5,5' (5cm x 1,68m) | 9-3012509B |
| Green belt 2" x 5,5' (5cm x 1,68m) | 9-3012509G |
| Orange belt 2" x 5,5' (5cm x 1,68m) | 9-3012509O |
| Red belt 2" x 5,5' (5cm x 1,68m) | 9-3012509R |
| Yellow belt 2" x 5,5' (5cm x 1,68m) | 9-3012509Y |



© Images Cyalume Sylvania/cambon - 09-2024

SAFETY INSTRUCTIONS

Our products are non dangerous, non explosive, non flammable, non hazardous, non toxic. They do not generate sparks, heat or flame. No maintenance, nor batteries are required. They are waterproof (can be used under water) and buoyant.

Keep in original wrap until ready to use. Do not puncture or cut product. Ingredients may stain clothing or furniture. Contact with skin or eyes may cause temporary discomfort. In case of skin or eyes contact, rinse thoroughly with water. Do not drink or ingest contents. Do not leave product in direct sunlight or expose to high temperatures. After use, dispose of in refuse container.

Shelf-life depending on the product type, is indicated on the foil/case and starts from date of manufacture. We do our best to supply you in best delays with freshest possible products.

Please keep the product in its foil before use or in its box to prevent light exposure otherwise it may affect the product's efficiency.

CYALUME® TECHNOLOGIES



SAFETY PROGRAM
DEPENDABLE, INSTANT LIGHT ...
WHEN LIVES DEPEND ON IT



6" SNAPLIGHT® LIGHSTICKS (15CM)

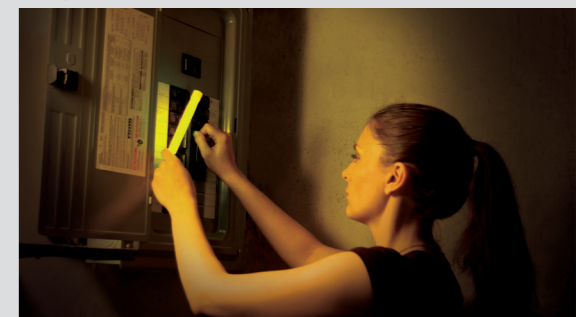
With a simple bend, snap, and shake, SnapLight® (15cm) industrial grade, phthalate-free chemical lightsticks provide instant light for all emergency situations. Each SnapLight® creates 360° of illumination, and is visible up to 1 mile. They are non-toxic, non-flammable, waterproof, and generate no heat or sparks. **Contact us for a customized individual foil to light up your brand. Possible customization of blisters, cardboard boxes, counter display units.**



CUSTOM PRINTING AVAILABLE

| 12 HOURS | PART# | CASE | 30 MINUTES | PART# | CASE |
|----------|--------------|------|------------|--------------|------|
| GREEN | SA8-08076BI | 500 | YELLOW-HI | SA8-08086BI | 500 |
| | SA8-108076BI | 100 | | SA8-108086BI | 100 |
| YELLOW | SA8-08082BI | 500 | RED-HI | SA8-08088BI | 500 |
| | SA8-108082BI | 100 | | SA8-108088BI | 100 |
| ORANGE | SA8-08084BI | 500 | WHITE-HI | SA8-08094BI | 500 |
| | SA8-108084BI | 100 | | SA8-108094BI | 100 |
| RED | SA8-08078BI | 500 | | | |
| | SA8-108078BI | 100 | | | |
| 8 HOURS | PART# | CASE | | | |
| BLUE | SA8-08080BI | 500 | | | |
| | SA8-108080BI | 100 | | | |
| WHITE | SA8-08098BI | 500 | | | |
| | SA8-108098BI | 100 | | | |

Shelf-life from date of manufacture:
5 years for the 12h / and 8h
4 years for the 30 min



IT'S NOT JUST BRIGHT. IT'S BRILLIANT.™



Distributed by:

Betalight b.v.
Hoge Eng-west 28 • 3882 TR, Putten
The Netherlands
+31 341 360111
www.betalight.nl • email: info@betalight.nl



when reliability really counts



IT'S NOT JUST BRIGHT. IT'S BRILLIANT.™

Distributed by:

Betalight b.v.
Hoge Eng-west 28 • 3882 TR, Putten
The Netherlands
+31 341 360111
www.betalight.nl • email: info@betalight.nl



when reliability really counts

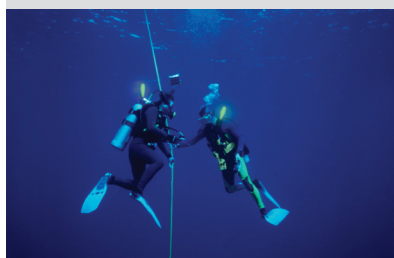
INDUSTRIAL LIGHTSTICKS

WHEN SAFETY DEPENDS ON LIGHT

SEARCH AND RESCUE

SETTING THE STANDARD IN SAVING LIVES

4" CHEMLIGHT® LIGHTSTICKS (10CM)

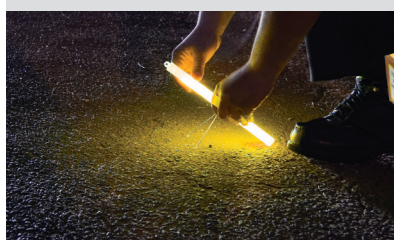


Lightweight and handy, 4" ChemLight® lightsticks are recommended for marking routes, clearing areas, vehicle lane night patrol and survival kits

| 4" ChemLight® | PART# | CASE |
|---------------------------------|-----------|------|
| 6 HR GREEN | 9-74780PF | 100 |
| 6 HR ORANGE | 9-76300PF | 100 |
| 6 HR YELLOW* (*MOQ > 2000 pcs.) | 9-74782PF | 100 |
| 6 HR RED* (*MOQ > 2000 pcs.) | 9-74781PF | 100 |
| 6 HR BLUE* (*MOQ > 2000 pcs.) | 9-74783PF | 100 |

Shelf-life from date of manufacture: 4 years

10" FLARE ALTERNATIVE® (25CM)



With no batteries required, the 10" SnapLight® offers 360° of illumination. It fits securely in a metal bipod stand to prevent rolling and is visible up to 1 mile (1,6km). SnapLight® lightsticks are maintenance-free, non-toxic, non-flammable, and waterproof.

| 10" Flare Alternative® | PART# | CASE |
|------------------------|-----------|-----------|
| 2 HR GREEN | 9-27049PF | 4 x 10-PK |
| 2 HR YELLOW | 9-27030PF | 4 x 10-PK |
| 2 HR RED | 9-27047PF | 4 x 10-PK |

Shelf-life from date of manufacture: 2 years

12" SNAPLIGHT® LIGHTSTICKS (30CM)

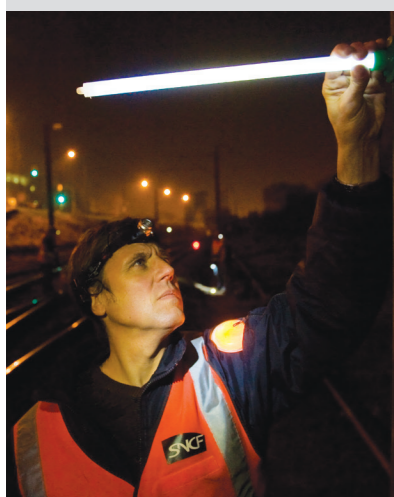


Widely used by Law Enforcement, mining and utility companies, the 12" SnapLight provides 3 times the brightness of a 6" lightstick. Individually wrapped in plastic sleeve packaging.

| 12" SnapLight® | PART# | CASE |
|----------------|-------------|------|
| 12 HR GREEN | 9-2705101PF | 25 |

Shelf-life from date of manufacture: 5 years

15" IMPACT® LIGHTSTICKS (40CM)



Also available in a non IMPACT® version, the 15" lightstick is the only one that activates on impact, providing instant illumination. When near gas or oil, or any combustible materials, the 15" IMPACT® stick is a dependable source of emergency lighting that is safe for use in all environments. Recommended for confined space lighting, vehicle repairs, building searches, bundle drops.

| 15" IMPACT® (2 End Rings) | PART# | CASE |
|---------------------------|-----------|----------|
| 12 HR GREEN | 9-87090PF | 4 x 5-PK |
| 12 HR YELLOW | 9-87110PF | 4 x 5-PK |
| 12 HR RED | 9-87120PF | 4 x 5-PK |
| 8 HR BLUE | 9-87100PF | 4 x 5-PK |
| 8 HR WHITE | 9-87130PF | 4 x 5-PK |
| 5 MIN ORANGE-HI | 9-87150PF | 4 x 5-PK |

| 15" Non-IMPACT (1 End Ring) | PART# | CASE |
|-----------------------------|-----------|----------|
| 12 HR GREEN | 9-03620PF | 4 x 5-PK |
| 12 HR YELLOW | 9-06130PF | 4 x 5-PK |
| 12 HR RED | 9-06120PF | 4 x 5-PK |
| 8 HR BLUE | 9-06140PF | 4 x 5-PK |
| 8 HR WHITE | 9-03670PF | 4 x 5-PK |

Shelf-life from date of manufacture: 4 years for the visible colors, 2 years for Orange

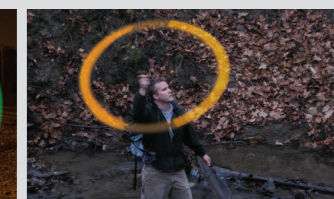
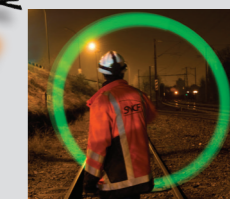
S.O.S.®

When the user spins the signaling device on its lanyard, it forms a distinctive circle pattern visible up to 3 miles (4,8km) from the air and 1 mile (1,6km) on land. Ideal for rescue operations.

| S.O.S.® | PART# | CASE |
|------------------------|-----------|------|
| 8 HR GREEN | 9-42740PF | 50 |
| 5 MIN ORANGE ULTRA-HI* | 9-68260PF | 50 |

*Available with MOQ of 100 pcs.

Shelf-life from date of manufacture: 4 years for the green 8h, 2 years for Orange HI 5 min



Personnel Marker Light PML®

Coast Guard approved, the PML® is the superior clip-on identifying signal for rescue-at-sea or evacuation operations. Designed to be lightweight, waterproof, and buoyant, the PML® is the ideal emergency locator.

| PML® | PART# | CASE |
|------------|-----------|------|
| 8 HR GREEN | 9-80770PF | 50 |

Shelf-life from date of manufacture: 4 years



MARKERS

MARK THE WAY TO SAFETY

LIGHTSHAPE® CIRCLE MARKERS

The self-adhesive 3" LightShape® Markers (8cm) can be used for medical triage, evacuation procedures, trail marking or as a personal protective equipment. Peel the paper backing and adhere to any surface.

| LightShape® | PART# | CASE |
|-------------|-----------|------------|
| 4 HR GREEN | 9-50860PF | 10 x 10-PK |
| 4 HR YELLOW | 9-42710PF | 10 x 10-PK |
| 4 HR ORANGE | 9-42730PF | 10 x 10-PK |
| 4 HR RED | 9-42720PF | 10 x 10-PK |
| 4 HR BLUE | 9-42700PF | 10 x 10-PK |

Shelf-life from date of manufacture: 4 years

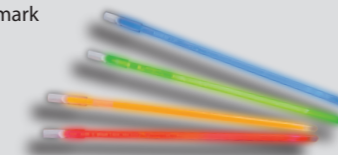


FLEXBANDS

The 8,25" (21 cm) FlexBand is the ideal emergency marker. FlexBands can be placed on wrists, stretchers, door handles... Combine FlexBands together to mark larger areas.

| FLEXBANDS | PART# | CASE |
|-------------|-----------|-----------|
| 6 HR GREEN | 9-85990PF | 12 x 3-PK |
| 6 HR ORANGE | 9-85970PF | 12 x 3-PK |
| 6 HR Lt RED | 9-85960PF | 12 x 3-PK |
| 6 HR BLUE | 9-85980PF | 12 x 3-PK |

Shelf-life from date of manufacture: 4 years



ALL LIGHTSTICKS ACCESSORIES

INCREASED PERFORMANCE

DIRECTIONAL HANDLE

Lightweight and durable, the handle is ideal for police officers and road construction crews who require a highly visible light for signaling or directing traffic.

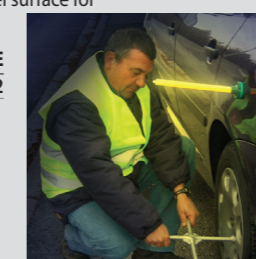
| ACCESSORY | PART# | CASE |
|--------------------|---------|------|
| DIRECTIONAL HANDLE | 9-33450 | 25 |



MAGNETIC BASE

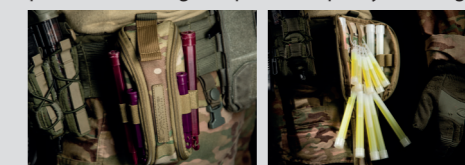
Allows a lightstick to be attached to any steel surface for maximum visibility.

| MAGNETIC BASE | PART# | CASE |
|----------------|-----------|------|
| SAFETY GRADE | SA9-33460 | 12 |
| MILITARY GRADE | 9-33460 | 25 |



CYPOUCH TACTICAL HOLDER

The CYPouch allows the tactical transport of lightsticks in a bundle or holster format. Compact, easy and quick to reload (elastic loops and metal rings) it will preserve the performance of your lightsticks and keep them protected from light exposure. Capacity: +/-20 lightsticks



| PRODUCT | PART # | NSN | CASE |
|------------|-----------------|-----|------|
| BLACK | SA9-CYPOUCH-BLK | N/A | tbc* |
| COYOTE | SA9-CYPOUCH-COY | N/A | tbc* |
| NATO GREEN | SA9-CYPOUCH-GRN | N/A | tbc* |
| MULTICAM | SA9-CYPOUCH-MUL | N/A | tbc* |

* MOQ communicated upon request